

M-AUDIO



Quick Start Guide

Thank you for choosing the M-Audio NRV10 FireWire mixer. The NRV10 combines a high-quality analog mixer with an integrated 10-in/10-out FireWire digital audio interface, allowing you to record up to ten channels of audio directly into your computer-based DAW, as well as to bring audio from your DAW back to its analog mixer channels. Its low-latency FireWire drivers support high-resolution sample rates of up to 96kHz at a bit depth of up to 24 bits, and its compact footprint makes it ideal for studio and live use.

This Quick Start Guide is designed to give you a very basic overview of the NRV10, in order to get you set up and running quickly. Even if you're an experienced computer user and recording enthusiast, we suggest you take the time to read the accompanying User Guide, found on the included CD-ROM. It will familiarize you with the unit's more advanced features, and help you to get the most out of your NRV10.

1 | Installing the NRV10

NOTE: Do NOT connect the NRV10 to your computer until you have run the installer program.

Installation Instructions for Windows XP

Make certain the NRV10 is not connected to your computer before beginning the installation.

1. We recommend you download the latest NRV10 drivers by going to the Support > Drivers page at www.m-audio.com. This will ensure that you have the newest available drivers. Once you have downloaded the latest drivers, simply double-click on the file once it has finished downloading.

If you do not have internet access, you can install the drivers packaged with the NRV10 by inserting the included FireWire Series CD-ROM into your computer's CD drive. Your computer will automatically display the interactive install screen **1**. (If the screen does not appear, you can manually start it by clicking on Start > My Computer > FireWire Series CD-ROM.) Select your product from the menu and click "install."

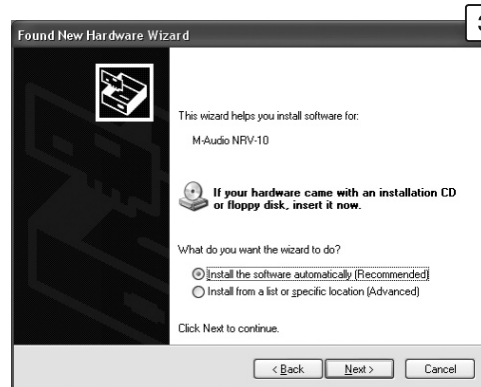
2. Follow the driver installer's on-screen instructions
3. At various points during the installation process, you may be notified that the driver being installed has not passed Windows Logo Testing. Click "Continue Anyway" to proceed with the installation.
4. Once the installer has completed, click "Finish."
5. Shut down your computer.
6. Connect the NRV10 to a power outlet and to an available FireWire port on your computer.
7. Power on the NRV10, then start your computer.



8. Windows will identify the new interface and ask if you want to search the Internet for a driver. Select "Not at this time" and click "Next." [2]
9. Windows will display the Found New Hardware Wizard.
10. Select "Install software automatically" and click "Next." [3]
11. When the Wizard has completed, click "Finish."
12. When the installation is complete, you will see a message stating "Your new hardware is installed and ready to use."

Your NRV10 will appear in Windows under Control Panel > Sounds and Audio Devices. The NRV10 Control Panel can be accessed by clicking on the red icon in the system tray.

IMPORTANT: While it is possible to "hotplug" a FireWire device, it is strongly recommended that you connect or disconnect your NRV10 only when your computer is powered off. For more information on this issue, please visit the M-Audio knowledge base at www.m-audio.com



Installation Instructions for Mac OS X

Make certain the NRV10 is not connected to your computer before beginning the installation.

1. We recommend you download the latest NRV10 drivers by going to the Support > Drivers page at www.m-audio.com. This will ensure that you have the newest available drivers. Once you have downloaded the latest drivers, the downloaded file should automatically mount and display its contents on the desktop. (If the file does not mount automatically, simply double-click on the file once it has finished downloading to view its contents, then double-click on the installer application.

If you do not have internet access, you can install the drivers packaged with the NRV10 by inserting the included FireWire Series CD-ROM into your computer's CD drive. Your computer will automatically display the CD-ROM icon on your desktop. Double-click on this icon to view the contents of the disk. Next, double-click "Open Me," and select your product from the drop-down menu on the welcome screen and click "Install."

2. Follow the driver installer's onscreen instructions.
3. When the installer has completed, click "Close."
4. Shut down the computer.
5. Connect the NRV10 to a power outlet and to an available FireWire port on your computer.
6. Power on the NRV10, then start your computer.

Your NRV10 will appear in Mac OS X under System Preferences > Sound, in the Input and Output tabs. The NRV10 Control Panel will appear in System Preferences > Other.

IMPORTANT: While it is possible to "hotplug" a FireWire device, it is strongly recommended that you connect or disconnect your NRV10 only when your computer is powered off. For more information on this issue, please visit the M-Audio knowledge base at www.m-audio.com

2 | Connecting the NRV10

Your NRV10 is equipped with five XLR mic inputs and eight 1/4" line inputs. Connect any combination of mic and line sources to these inputs, being sure to choose the appropriate input source on each channel's corresponding Mic/Line selector. If you are connecting condenser microphones, be sure to activate the Phantom Power switch.

You can connect external signal processors (typically dynamics processors) to any of the channel inserts on input channels 1 through 4, as well as to the rear-panel Main Mix insert. You can also connect external signal processors (typically reverbs or other multi-effects devices) to the NRV10's Aux Send and Aux Return jacks.

Connect your powered monitor speakers or power amp to the rear-panel Main Mix outputs. The Main Mix outputs are provided as both XLR and 1/4" TRS output connectors. Although both sets of connectors carry the same signal, it is recommended under most circumstances that only one set of outputs be connected at any time. (Connecting to both sets of outputs will not damage your mixer, but will result in reduced overall output levels.) You can connect an additional set of powered monitors or monitor amp to the rear-panel Control Room outputs.

And finally, connect the included FireWire cable from either of the NRV10's rear-panel FireWire ports to your computer's FireWire input.

IMPORTANT: Routing signals incorrectly between the NRV10 and your computer-based DAW—in particular, pressing the pre/post EQ button in certain routing configurations—can result in a feedback loop that can damage your hearing and your equipment. Please refer to Section 10 of the included User Guide, "Monitoring Live Audio While Recording to Your DAW," before you use your NRV10.

3 | Using the Control Panel

The Control Panel provides you with the ability to monitor some of the NRV10's basic functions and gives you control over some of its features. Refer to the User Guide for full information on using the Control Panel.

4 | Additional Information and Support

The M-Audio website (www.m-audio.com) contains the latest drivers and program updates, as well as useful links to news stories, FAQs and technical support. We recommend checking this site regularly to ensure you have the latest drivers and the most up-to-date information on your M-Audio product.

© 2006 Avid Technology, Inc. All rights reserved. Product features, specifications, system requirements and availability are subject to change without notice. Avid, M-Audio and NRV10 are either trademarks or registered trademarks of Avid Technology, Inc. All other trademarks contained herein are the property of their respective owners.

WARNING: This product contains chemicals, including lead, known to the State of California to cause cancer, and birth defects or other reproductive harm. ***Wash hands after handling.***

